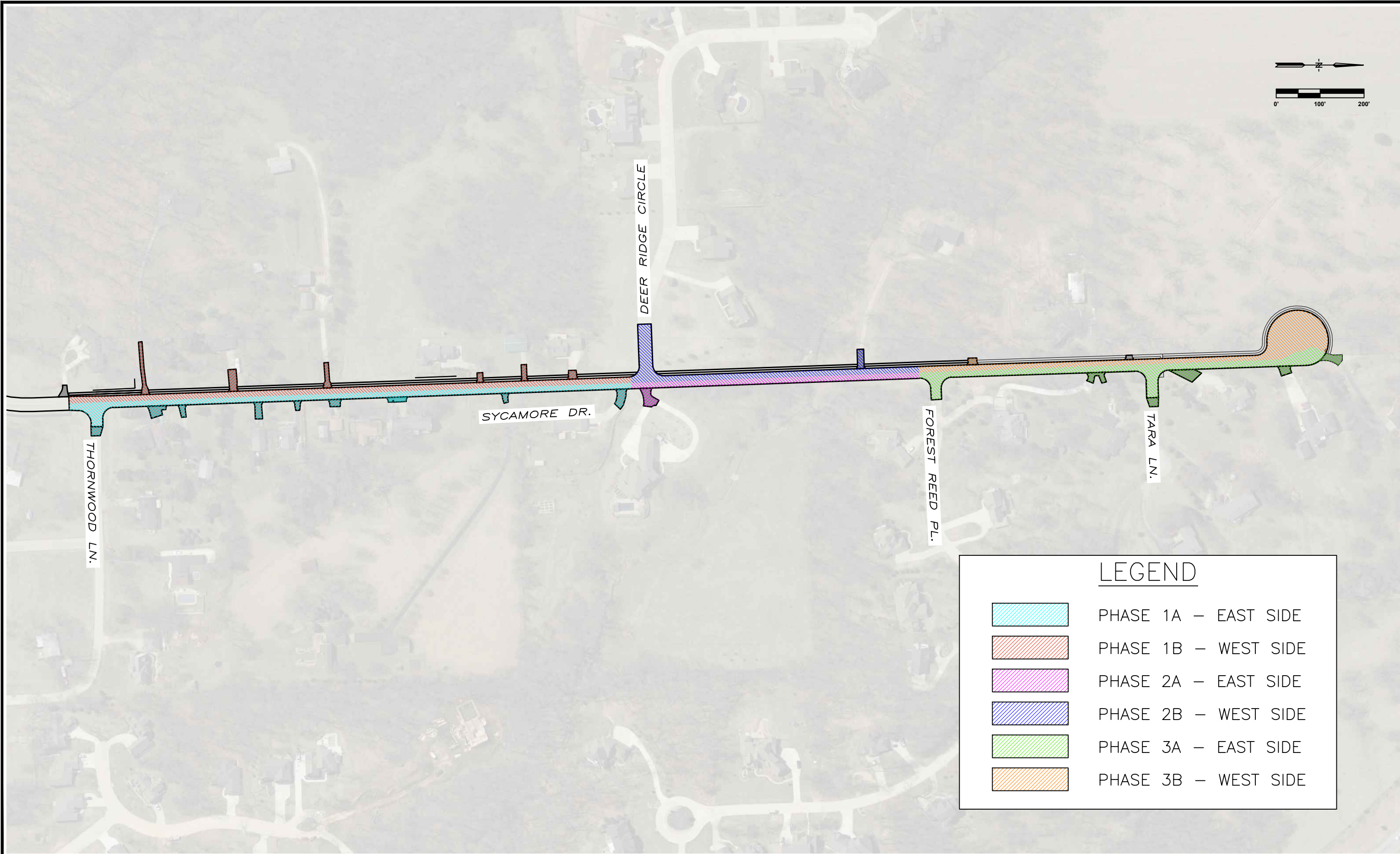
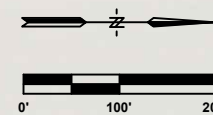


PLOTTED: Friday, October 25, 2019 2:45:04 PM

X-REFS: 56135 Aerial & 56135 Geometry_with_culdesac
 FILE PATH: Z:\LECLAIRE 56135 SYCAMORE DR. RECONSTRUCTION\DRAWINGS\DESIGN DRAWINGS\PHASE LAYOUT



LEGEND	
	PHASE 1A – EAST SIDE
	PHASE 1B – WEST SIDE
	PHASE 2A – EAST SIDE
	PHASE 2B – WEST SIDE
	PHASE 3A – EAST SIDE
	PHASE 3B – WEST SIDE

DATE	REVISIONS

SCALE	AS NOTED
DRAWN	KMR
CHECKED	JLM
APPROVED	JLM
DATE	10/25/2019
ISSUED FOR	REVIEW/CONST

V&K
VEENSTRA & KIMM, INC.

SYCAMORE DRIVE RECONSTRUCTION
 CITY OF LECLAIRE

1800 5th Ave • Rock Island, Illinois 61201
 309-786-7590 • 309-797-0996(FAO) • 877-241-8010(WATS)

PHASE DIAGRAM

DWG. NO.
1
PROJECT 56135